

Places to Stay

BATLOW HOUSE SERVICED ACCOMMODATION

Batlow House is a stylishly renovated 1922 Federation home centrally located 300m from the Batlow retail centre.

W: www.batlowhouse.com.au | P: 0439 475 383

JESSIE SAWYER MOUNTAIN COTTAGE

Fully self contained cottage style accommodation operated by the local CWA.

P: 02 6947 1722

BATLOW CARAVAN PARK

Powered and un-powered sites.

P: 02 6949 10444

DIGGERS REST MOTEL

10 unit motel ideally situated in the heart of town.

P: 02 6949 1342

BATLOW HOTEL

Country Australian pub accommodation.

P: 02 6949 1001

BLOWERING FOREST CAMP

Single and group accommodation on the shores of Lake Blowering.

P: 02 69475 271

LAUREL HILL FOREST LODGE

20kms south of Batlow towards Tumbarumba, group accommodation and conference facilities.

W: www.laurelhillforestlodge.com.au |

P: 02 6948 8869



BATLOW APPLE BLOSSOM FESTIVAL

Exciting annual festival full of family fun.

Third weekend in October |

P: 02 6947 7025 |

W: www.batlowfestival.org

BATLOW SHOW

An annual celebration of the vibrancy of the local horticultural and agricultural industry and the Batlow community.

Annually | P: 02 6949 1683

EASTER BAZAAR

An annual market day with food, crafts, second hand goods, and lots more.

Good Friday | P: 02 6949 1270

CHRISTMAS FAIR

A flea market style market day full of hand made goodies for Christmas and fun kids activities.

Last Saturday in November annually | P: 02 6949 1270



Things to Do

Places to Visit

CASCADES NURSERY

Quality trees for courtyards, backyards and farmyards

Thank you for ringing first. | P: 02 6949 1268

W: www.cascadenursery.com.au

GOULDS NURSERY

Specialist in natives for cool climates.

Open daily | P: 02 6949 1098

HISTORICAL SOCIETY

MUSEUM

Eclectic collections significant to the history of Batlow.

Open Sundays, 10am - 12 noon

Oct-May | P: 0429 491 769

AGRIVEST FRUIT PACKING FACILITY

Visitors welcome. Group tours by appointment. Fruit sales.

Open Mon-Fri. | P: 02 6949 1835.

ROADSIDE FRUIT STALLS

Farm gate fruit sales. Various orchards along the Batlow Road.

Open Seasonally |

MOUNTAIN VIEW CAFE

Eat in or take away meals.

Open daily | P: 02 6949 1110

BATLOW RSL CLUB RESTAURANT

Australian and Chinese meals for lunch, dinner and takeaway.

Tue - Sun | P: 02 6949 1503.

BATLOW HOTEL

Daily specials for lunch and dinner.

Tue—Sun | P: 02 6949 1001

FATTY & SLIM'S BAKERY

Daily specials for lunch, baked treats and coffee.

Mon—Sun | P: 02 6949 1111

COFFEE & MORE

Coffee, breakfasts, light lunches and delicious home made cakes..

Mon—Sun | P: 02 6949 2458



Places to Eat

For more information please visit the website

www.visitbatlow.com.au

Or contact the Tumut Region Visitor

Information Centre on 02 69477025

Batlow

FAMOUS FOR APPLES

YOUR GUIDE TO THE
SERVICES OF THE
BATLOW TOWNSHIP



WWW.VISITBATLOW.COM.AU

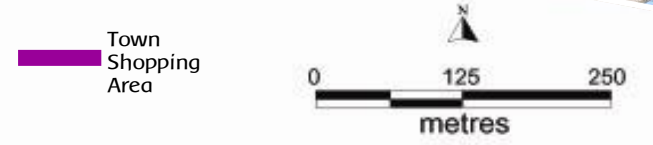
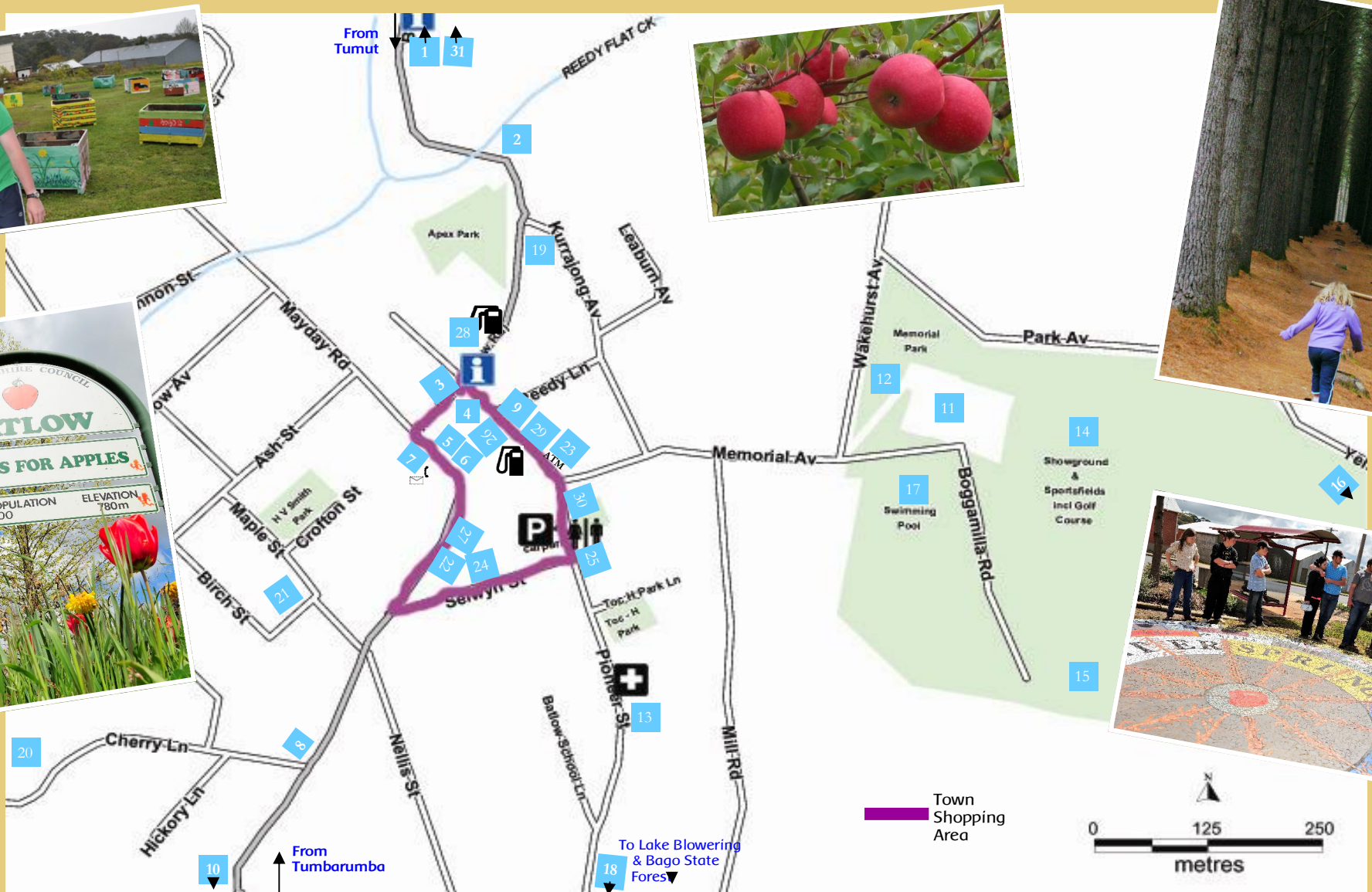
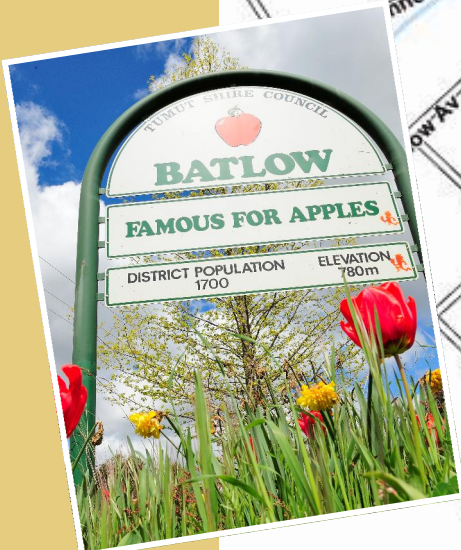
Fruitful orchards, friendly people

Lush green pastures, rich red soil

Abundant natural beauty

Outdoor adventures, stunning scenery

Bountiful fruit straight from the farm gate



- | | | |
|--|---|---|
| <ol style="list-style-type: none"> 1. Springfield Orchard - Tourist Information 2. Batlow Caravan Park 3. Batlow Hotel 4. Newsagency 5. Batlow RSL Club 6. Digger's Rest Motel 7. Post Office, Hardware & Laundromat 8. Doctors Surgery 9. Coffee and more coffee shop 10. Agrivest Packing Facility | <ol style="list-style-type: none"> 11. Batlow Bowling Club 12. Tennis Courts 13. Batlow Hospital/Ambulance Station 14. Showground & sports fields 15. Golf Club 16. Cascade Nursery 17. Swimming Pool 18. Batlow Fruit Cooperative 19. Goulds Nursery 20. Weemala Lookout 21. Police Station | <ol style="list-style-type: none"> 22. IGA Supermarket 23. Commonwealth Bank (+ATM) 24. Hairdresser 25. Library and Rural Transaction Centre 26. Service Station 27. Fatty & Slim's Bakery 28. Service Station & NRMA 29. Pharmacy 30. Community Centre (Meals on Wheels & Community Transport) 31. Roadside Stalls |
|--|---|---|

